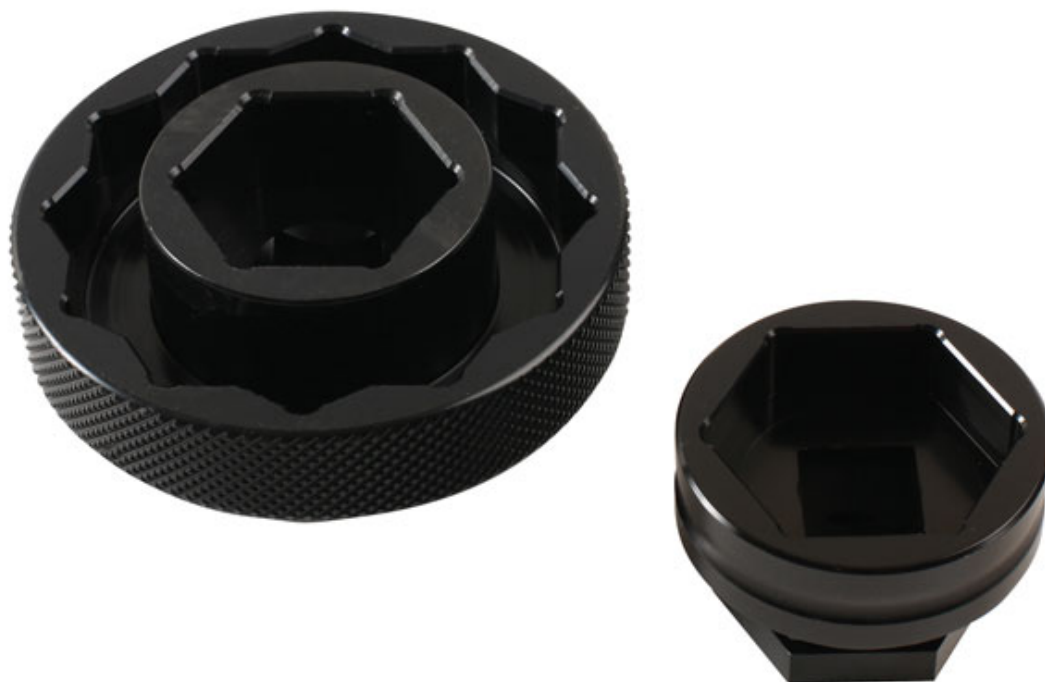


## Front & Rear Wheel Sockets 1/2"D - for Ducati

A 2 piece set of 1/2"D Ducati wheel sockets for loosening and tightening front and rear wheel nuts.



### Additional Information

- Applications - 30mm: rear wheel of GT1000.
- Applications - 28mm: front wheels of 748, 916, 998, 996, Hypermotard, Multistrada, all Monsters, Supersport & Superclassic models.
- Applications - 55mm Bi-Hex: fits S1098, 1198, 1098S, 1098R, 1198, 1198S & Street Fighter.
- Manufactured from lightweight aluminium.
- 

<http://lasertools.co.uk/product/5339>

